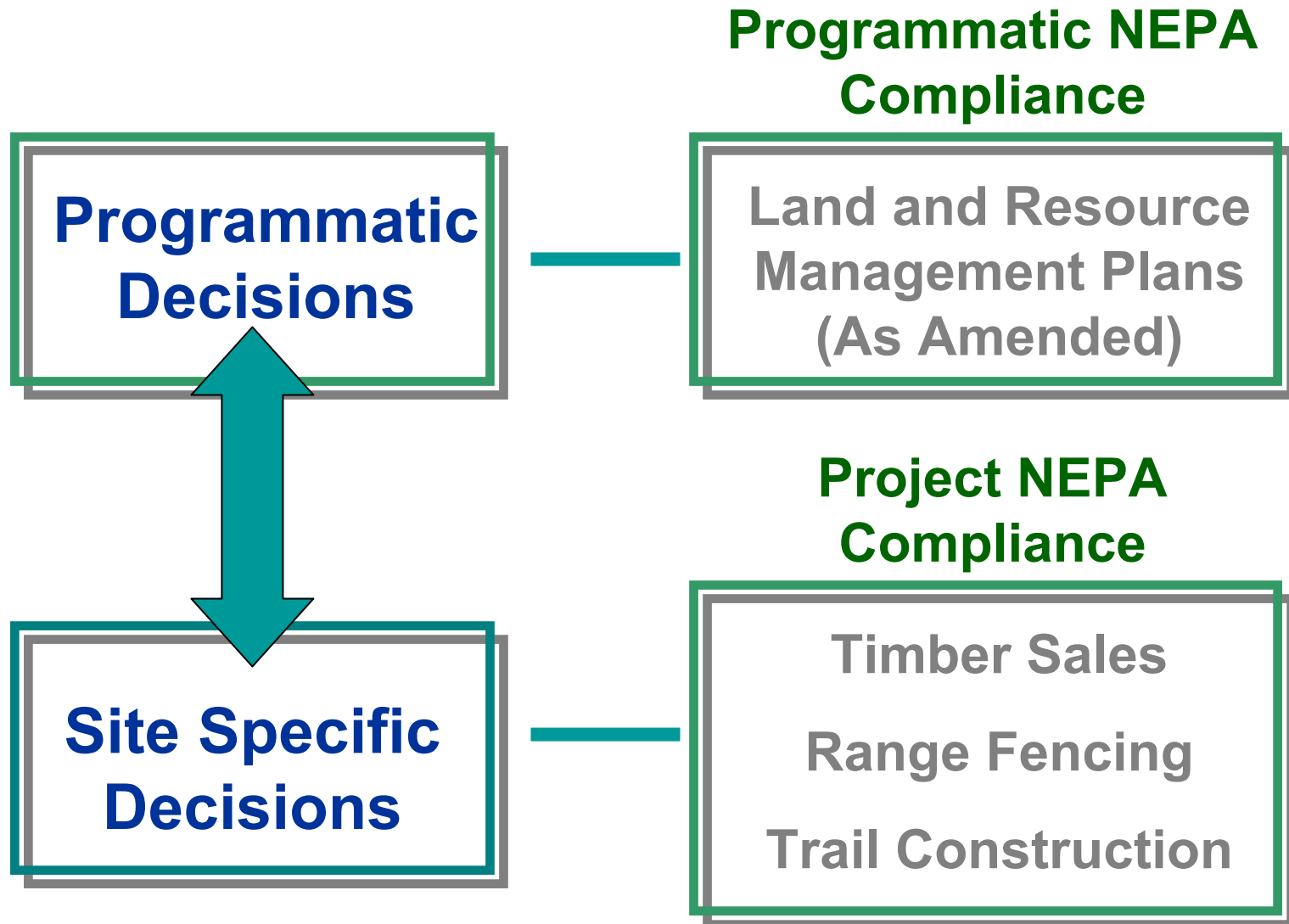


After the SPB

Management Challenges

Dave Purser

Two Decision Types

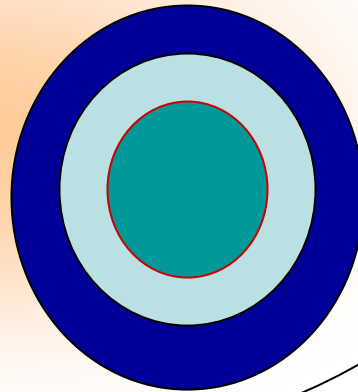


Twin Aims of NEPA

“Agencies have the obligation to consider every significant aspect of the environmental impacts of the proposed action.”

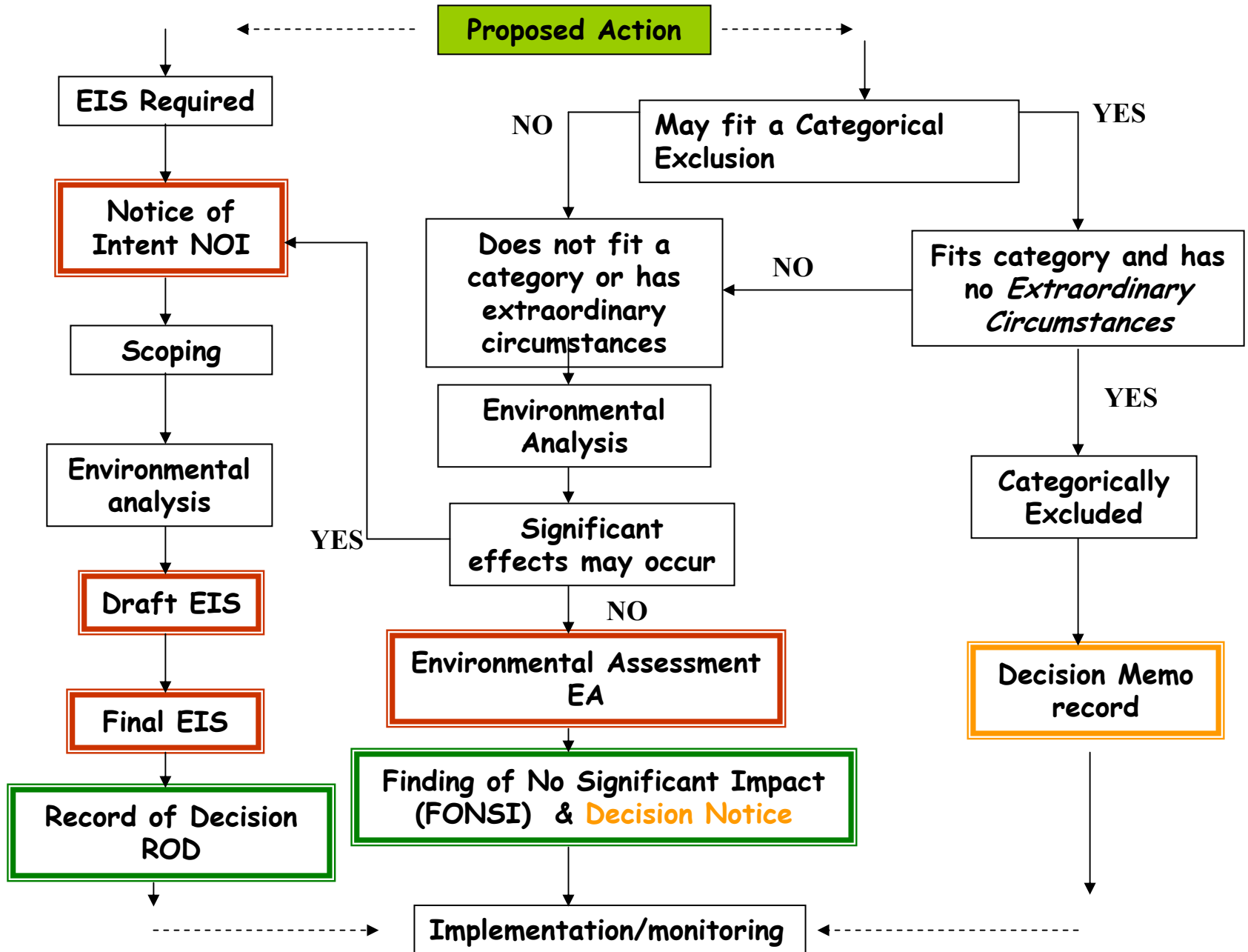
“Agencies will inform the public that environmental concerns have been considered in the decision making process.”

Consider



Inform

NEPA Process Overview



An Example Forest Service Categorical Exclusion

31.1b(4) Repair and maintenance of roads, trails, and landline boundaries. Examples include but are not limited to:

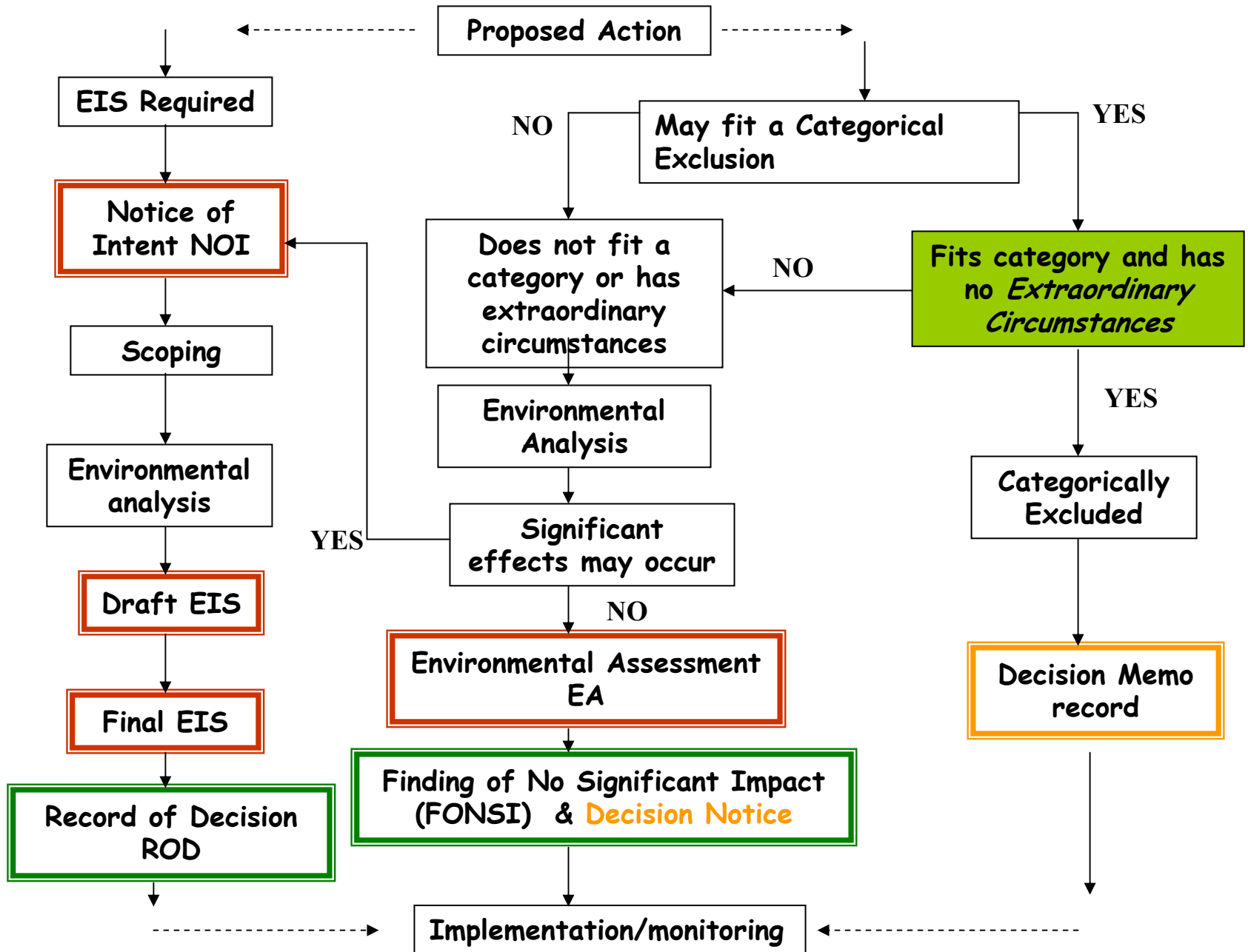
- a. Authorizing a user to grade, resurface, and clean the culverts of an established National Forest System road.**
- b. Grading a road and cleaning the roadside of brush without the use of herbicides.**
- c. Resurfacing a road to its original condition.**
- d. Pruning vegetation and cleaning culvers along a trail and grooming the surface of a trail**
- e. Surveying, painting, and posting landline boundaries**

Establishing Extraordinary Circumstances

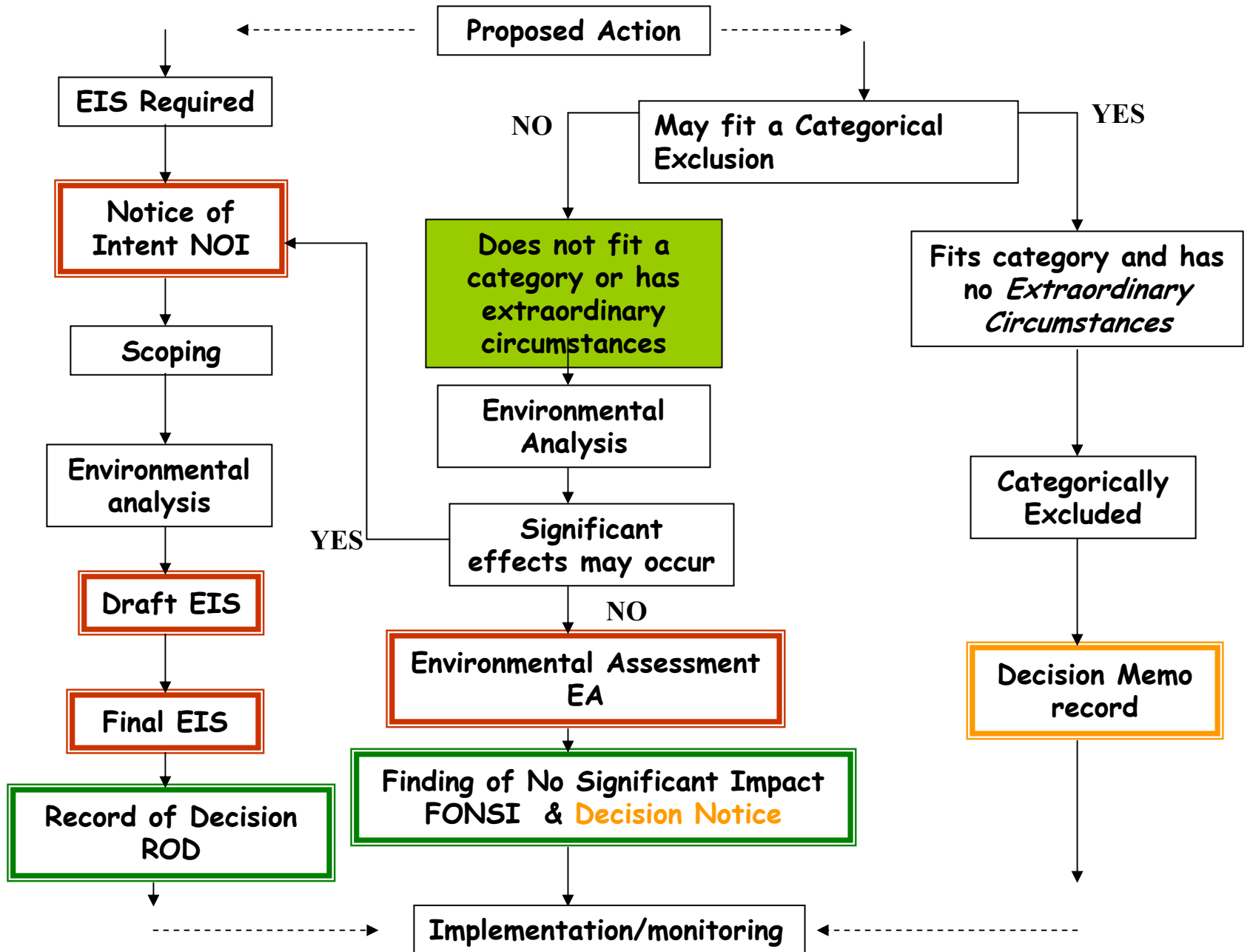
Extraordinary circumstances are triggered when the action will affect :

- **Steep slopes or highly erosive soils**
- **Threatened and endangered species or their critical habitat**
- **Flood plains, wetlands, or municipal watersheds**
- **Congressionally designated areas (wilderness, NRA)**
- **Inventoried roadless areas**
- **Research Natural Areas**
- **Native American religious or cultural sites**

NEPA Process Overview



NEPA Process Overview--EAs



NEPA Process Significance Criteria

What are *significant effects* ?

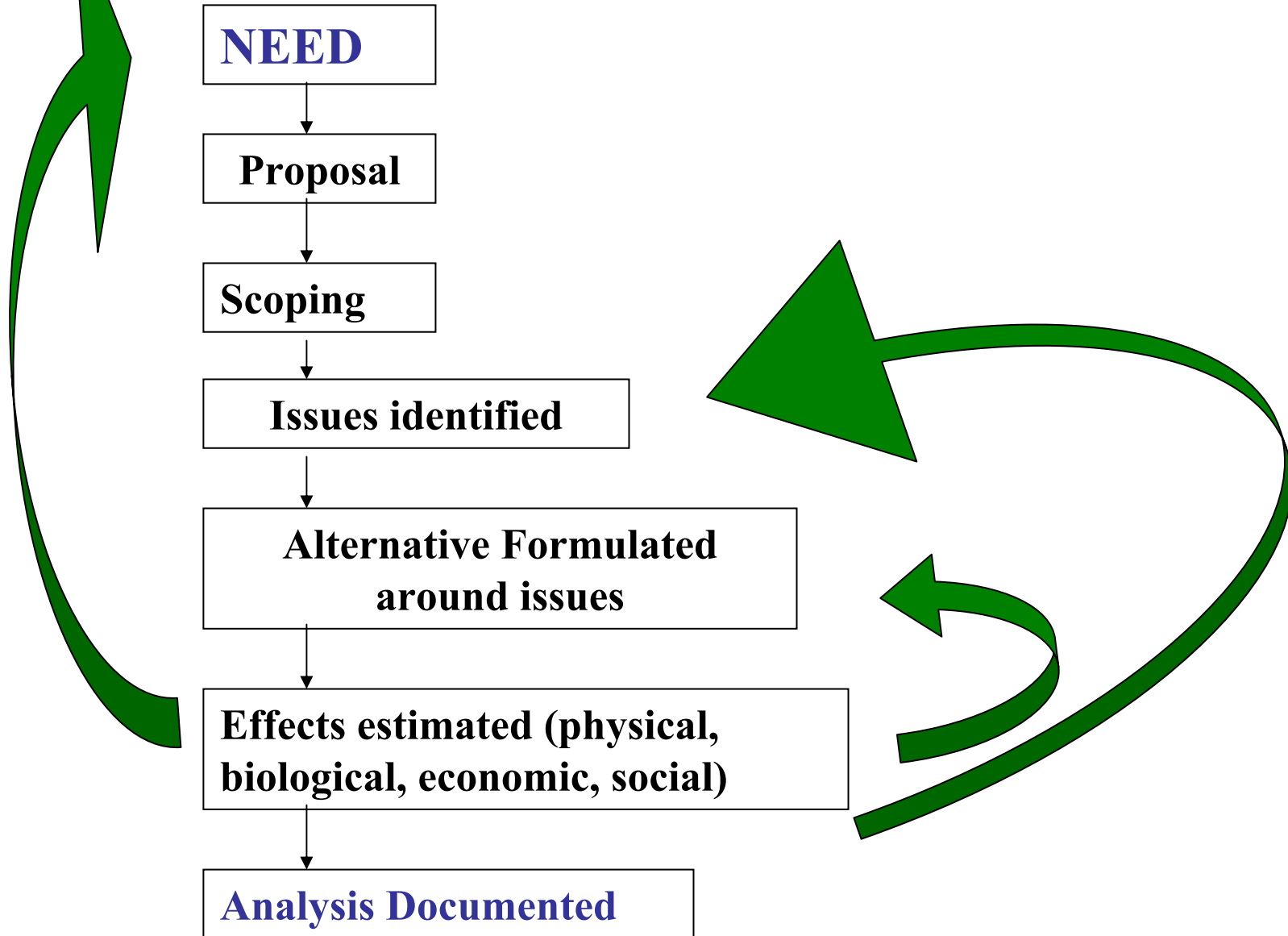
Context

- Setting
- Scope (geographical)

Intensity

- Public health and safety
- Unique characteristics (historical, wetlands, etc)
- Effects highly controversial
- Precedence for future actions
- Cumulative significant
- Historic places or resources
- Endangered and threatened species
- Threatens to violate Fed, State, Local laws

NEPA Analysis Process



Plan Implementation

Plan to Project

Scoping NEPA Project

Forest Plan
Consistency

Proposed Action/
Purpose & Need

Possible
Activities

Issue
Identification

Alternatives

Needs

Effects

NFMA Findings

Desired Conditions/
Existing Conditions

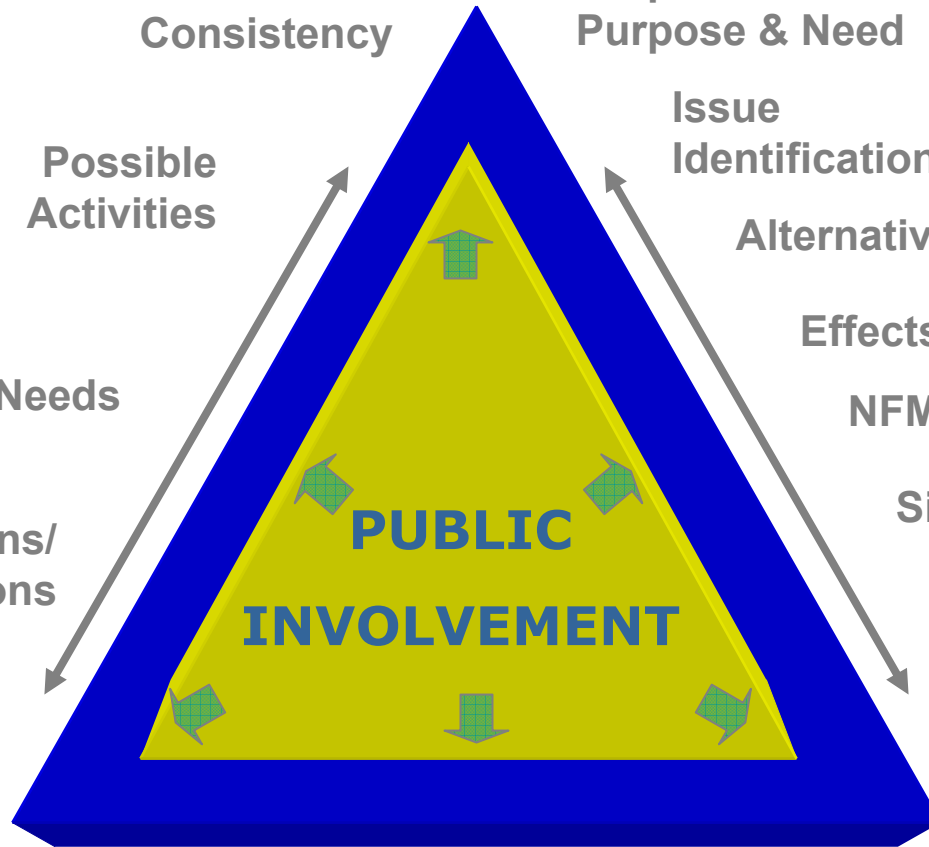
Significance

Decision

Location

Notification

Implementation



Adjustment Evaluation Monitoring

Feedback

NEPA Analysis Process

