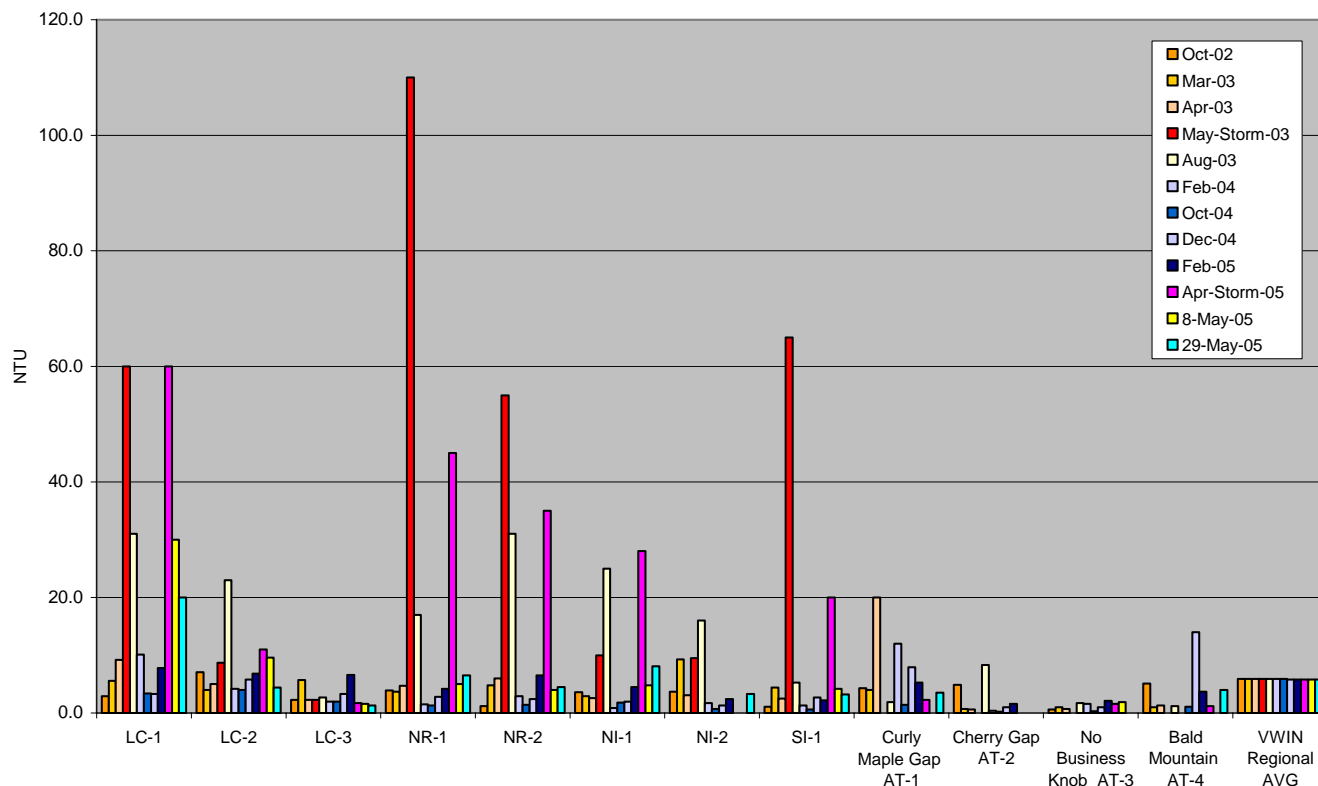


**UNWA Water Quality Monitoring Results: Turbidity**  
**Fall 2002 - Spring 2005**  
*Lab Analysis Performed in Collaboration with University of North Carolina - VWIN*



Turbidity (NTU)												
Data Stations	Oct-02	Mar-03	Apr-03	May-Storm-03	Aug-03	Feb-04	Oct-04	Dec-04	Feb-05	Apr-Storm-05	8-May-05	29-May-05
LC-1	2.9	5.6	9.2	60.0	31.0	10.1	3.4	3.3	7.8	60.0	30.0	20.0
LC-2	7.1	4	5.0	8.7	23.0	4.2	4.0	5.8	6.8	11.0	9.6	4.4
LC-3	2.3	5.7	2.3	2.3	2.7	2.0	2.0	3.3	6.6	1.7	1.6	1.3
NR-1	3.9	3.7	4.7	110.0	17.0	1.5	1.3	2.8	4.2	45.0	5.0	6.5
NR-2	1.2	4.8	6.0	55.0	31.0	2.9	1.4	2.4	6.5	35.0	4.0	4.5
NI-1	3.6	2.9	2.6	10.0	25.0	0.9	1.8	2.0	4.5	28.0	4.8	8.1
NI-2	3.7	9.3	3.1	9.5	16.0	1.7	0.7	1.3	2.4			3.3
SI-1	1.1	4.4	2.5	65.0	5.3	1.3	0.6	2.7	2.2	20.0	4.2	3.2
Curly Maple Gap AT-1	4.3	4	20.0		1.9	12.0	1.4	7.9	5.3	2.3		3.5
Cherry Gap AT-2	4.9	0.7	0.6		8.3	0.4	0.2	1.0	1.6			<1
No Business Knob AT-3	0.6	1	0.7		1.7	1.6	0.3	1.0	2.1	1.6	1.9	<1
Bald Mountain AT-4	5.1	1	1.3		1.2		1.1	14.0	3.7	1.2		4.0
VWIN Regional AVG	5.9	5.9	5.9	5.9	5.9	5.9	5.9	5.8	5.8	5.80	5.8	5.8